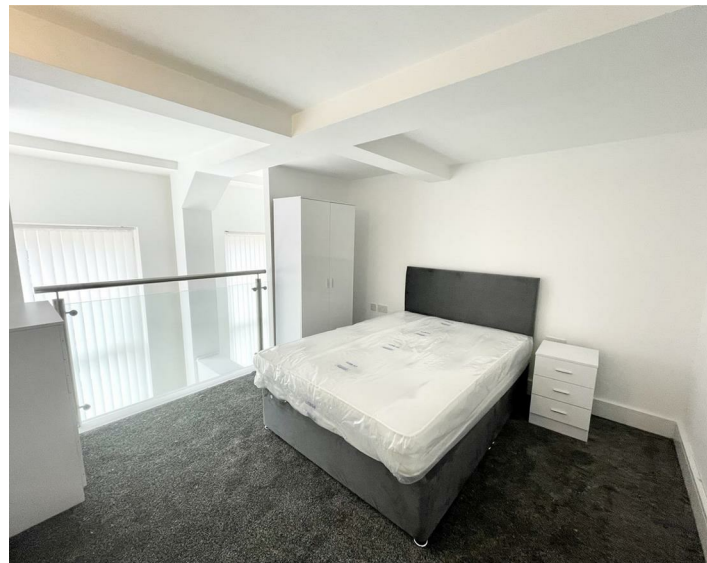




Apt 7 Sovereign Chambers, Liverpool, L2 5BA
£825 PCM

www.
cityresidential
.co.uk



About the Property

AVAILABLE NOW is this well presented spacious one bedroom duplex apartment on first floor of this modern conversion.

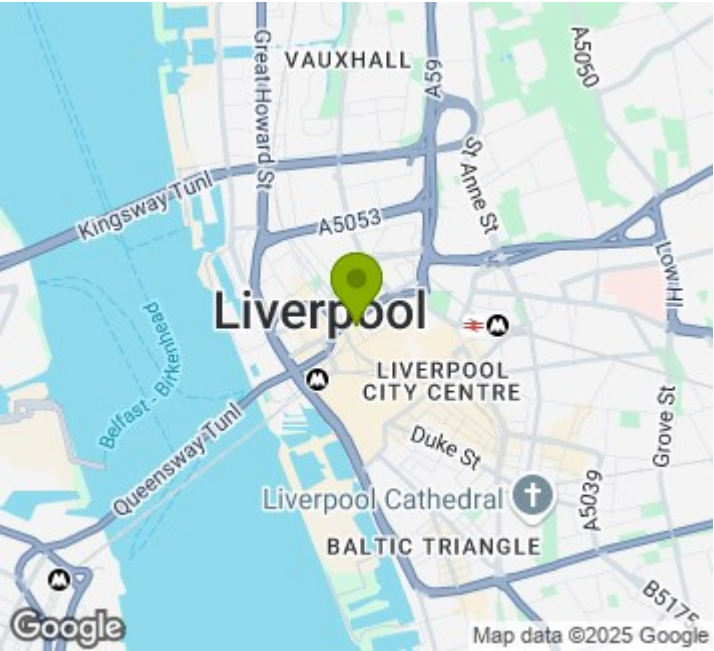
The apartment is located off Victoria Street and Dale Street and conveniently located for easy access to the city centre amenities.

This apartment is fully furnished to a high standard with a fully fitted kitchen, a double bedroom, a further room upstairs which can be used as a single bedroom and a well appointed main bathroom.

Sovereign Chambers is serviced by a lift to all floors and there is no parking with this property.

EPC - C. Council Tax Band - B. Deposit Amount - £951.00 Call us now on 0151 231 6100 to arrange a viewing.

- EPC - C
- Council Tax Band - B
- Deposit Amount - £951
- Immediate Move In



Energy Efficiency Rating

	Current	Potential
Very energy efficient - lower running costs		
(92 plus) A		
(81-91) B		
(69-80) C	71	73
(55-68) D		
(39-54) E		
(21-38) F		
(1-20) G		
Not energy efficient - higher running costs		
England & Wales	EU Directive 2002/91/EC	



City Residential
81/87 Victoria Street, The Old Haymarket, Liverpool L1 6DG
T: 0151 231 6100 F: 0151 231 6105
E: sales@cityresidential.co.uk



WWW.
cityresidential
.co.uk